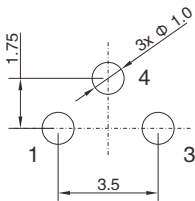


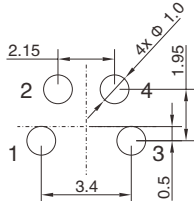
## M8 PCB 孔位分布图 & 钻孔尺寸

### ■ PCB 孔位分布图

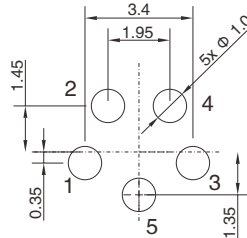
#### M8 公头连接器



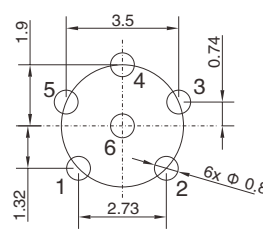
3P (Pin OD:  $\Phi$  0.8)



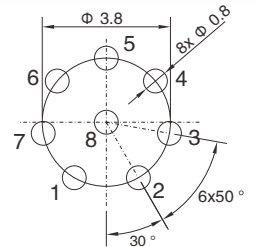
4P (Pin OD:  $\Phi$  0.8)



5P (Pin OD:  $\Phi$  0.8)



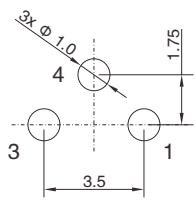
6P (Pin OD:  $\Phi$  0.6)



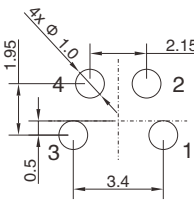
8P (Pin OD:  $\Phi$  0.6)

建议钻孔分布图

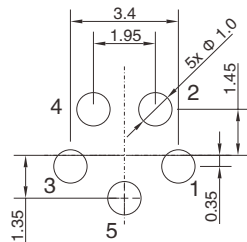
#### M8 母头连接器



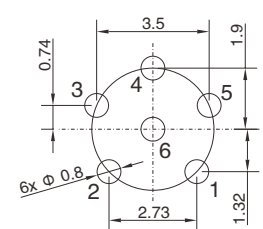
3P (Pin OD:  $\Phi$  0.8)



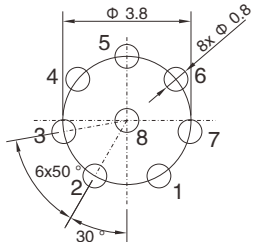
4P (Pin OD:  $\Phi$  0.8)



5P (Pin OD:  $\Phi$  0.8)



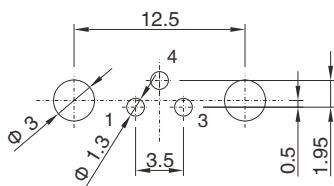
6P (Pin OD:  $\Phi$  0.6)



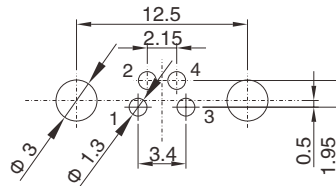
8P (Pin OD:  $\Phi$  0.6)

建议钻孔分布图

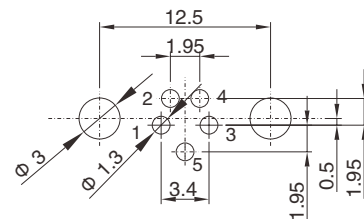
#### M8 弯针公头连接器



3P



4P



5P

建议钻孔分布图